

# Broader Regional Market Metrics

New York Independent  
System Operator

November 2015

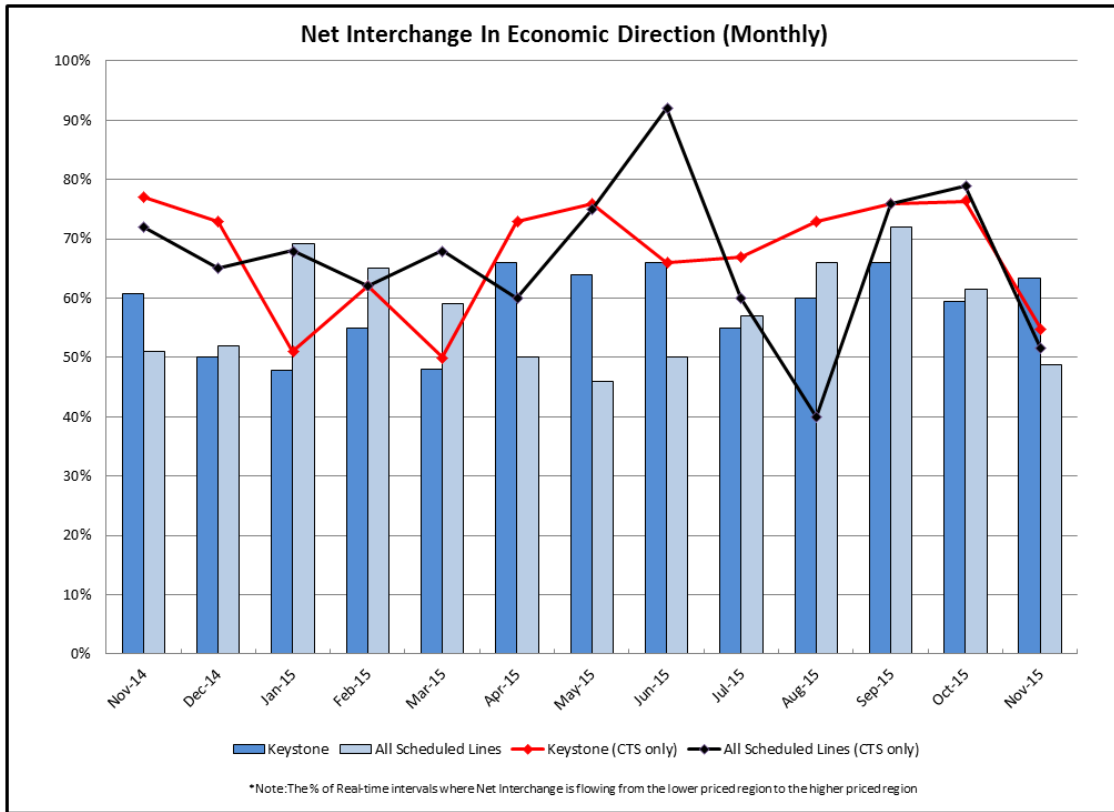
## November 2015 Broader Regional Markets Highlights

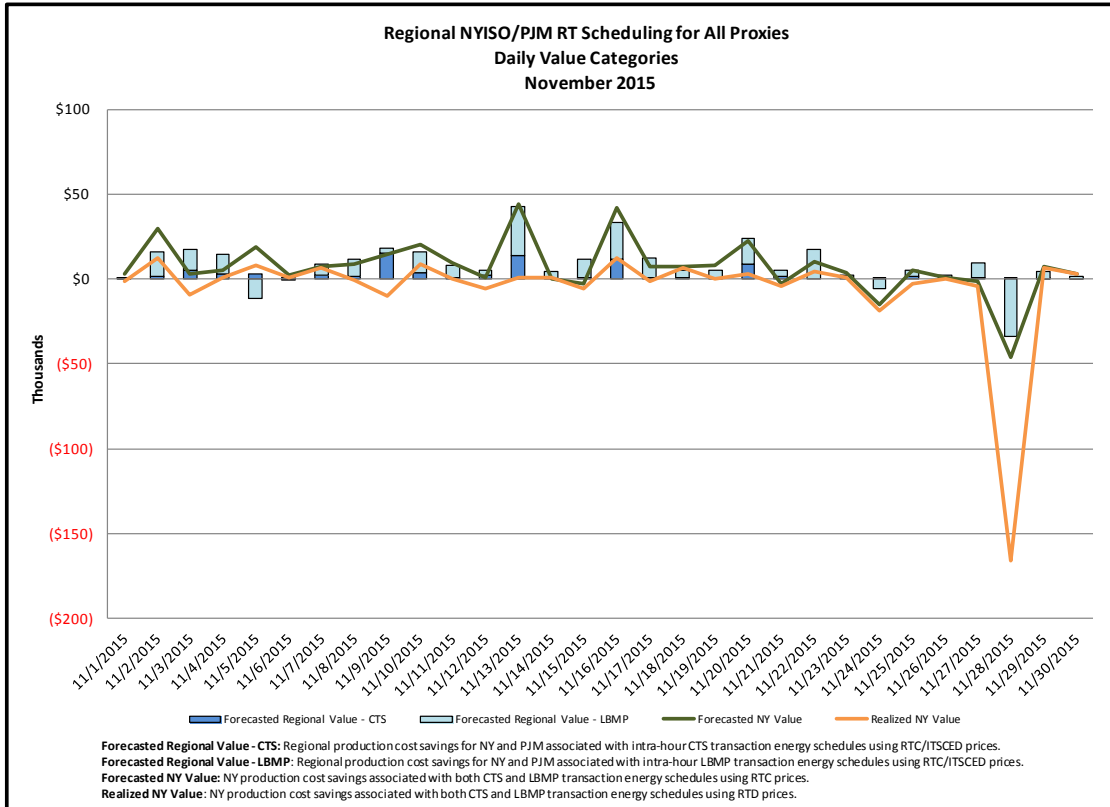
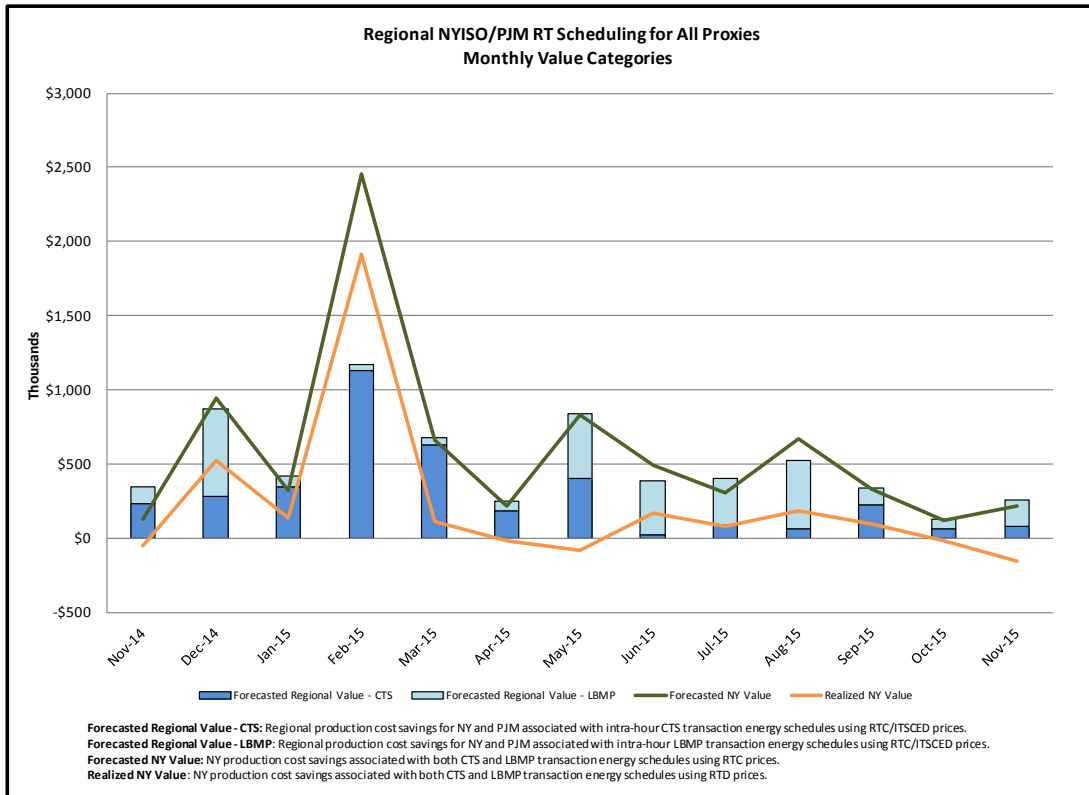
- At PJM Keystone, there was an average of 153MWs<sup>1</sup> per hour of CTS offers, and an average of 11MWs per hour of CTS schedules.
- At the three PJM scheduled lines, there was an average of 25MWs per hour of CTS offers, and an average of 2MWs per hour of CTS schedules.
- Scheduled interchange at PJM Keystone associated with CTS transactions flowed in the economic direction in 55% of the real-time intervals, as compared to total interchange which flowed in the economic direction in 63% of the real-time intervals.
- At the three PJM scheduled lines, scheduled interchange associated with CTS transactions flowed in the economic direction in 52% of the real-time intervals, as compared to total interchange which flowed in the economic direction in 49% of the real-time intervals.
- There was a \$0.15M production cost increase associated with real-time transaction scheduling with PJM (\$0.22M forecasted savings at time schedules are set). Year-to-date, the NY production cost savings is \$2.4M (\$6.6M forecasted savings).

## Pricing Data<sup>2</sup>





Interface	Max Forecasted Price Spread	Min Forecasted Price Spread	Forecasted Price Spreads minus Real-time Price Spreads					
			< \$-20	\$-20 to \$-10	\$-10 to \$0	\$0 to \$10	\$10 to \$20	> \$20
Keystone	\$379.85	(\$648.96)	6.8%	6.2%	41.4%	33.9%	5.1%	6.5%
HTP	\$400.74	(\$667.75)	5.4%	7.4%	41.0%	35.3%	6.5%	4.4%
NEPTUNE	\$982.37	(\$662.58)	6.7%	7.6%	38.0%	34.2%	7.1%	6.3%
VFT	\$398.48	(\$739.28)	5.4%	7.8%	40.9%	35.2%	6.3%	4.3%

1. All MW Values include the absolute sum of both imports + exports. Wheels have been excluded.
2. "Forecasted Prices" refer to NYISO's RTC LBMP and PJM's ITSSED LMP. "Real-time Prices" refer to NYISO's RTD LBMP and PJM's RTSCED LMP. Forecasted Prices are used during NYISO's RTC evaluation to schedule transactions. Real-time Prices are used to settle transactions. Price Spreads are always calculated as NYISO's LBMP minus PJM's LMP.





### Regional NYISO/PJM RT Scheduling for All Proxies

<u>Category</u>	<u>Description</u>
 Forecasted Regional Value - CTS	Forecasted regional production cost savings from the intra-hour (non-TOH) energy schedule changes on CTS bids (Intra-hour CTS Schedule Changes * [NY RTC LBMP - PJM IT SCED LMP]).
 Forecasted Regional Value - LBMP	Forecasted regional production cost savings from the intra-hour (non-TOH) energy schedule changes on LBMP bids (Intra-hour LBMP Schedule Changes * [NY RTC LBMP - PJM IT SCED LMP]).
 Forecasted NY Value	Forecasted NY production cost savings from the intra-hour (non-TOH) energy schedule changes on CTS and LBMP bids (Total Intra-hour CTS & LBMP Schedule Changes * NY RTC LBMP).
 Realized NY Value	Realized NY production cost savings from the intra-hour (non-TOH) energy schedule changes on CTS and LBMP bids (Total Intra-hour CTS & LBMP Schedule Changes * NY RTD LBMP).

